



Play Gloucestershire Satisfaction Survey Results

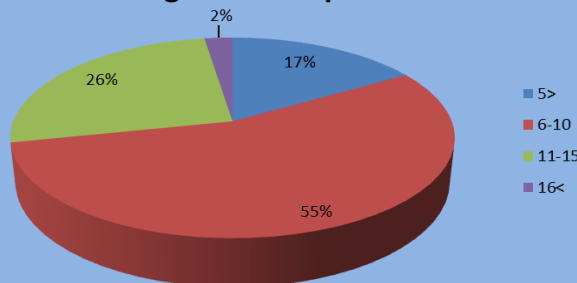
- Over a six week period 348 people completed our Satisfaction Survey from the Gloucestershire districts of the Cotswolds, Forest of Dean, Gloucester, Stroud and Tewkesbury. The Survey was carried out by our Young Volunteers who encouraged people to fill it out at our summer play sessions.
- We encouraged children and young people to fill out their own surveys. 52% of participants were male and 48% of participants were female. Every person who completed a Survey was offered a Play Gloucestershire temporary tattoo.
- Our aim from the Survey was to find out children and young people's opinions about our community based play provision. This included activities, our Play Rangers and if they would recommend us to their friends and family.

Where do you live?



During this period, Play Gloucestershire were delivering community play in all county districts except Cheltenham. The highest returns were in Gloucester and the Cotswolds; which reflects the amount of community play being delivered here. Most of the 15 people categorised under other were visitors from outside of the county. Some visited from just over the Gloucestershire border and others from as far away as the USA.

Age of Participants



The pie chart shows that 81% of survey participants were aged between 6 and 15. Our sessions are targeted at school aged children and young people, and particularly at those between the age of 7 and 14. This shows that we are attracting the right age of participants. Children aged 5 and under are attending with parents and carers, and often older siblings. Our community play delivery caters for a wide age range, making it popular with whole families.



